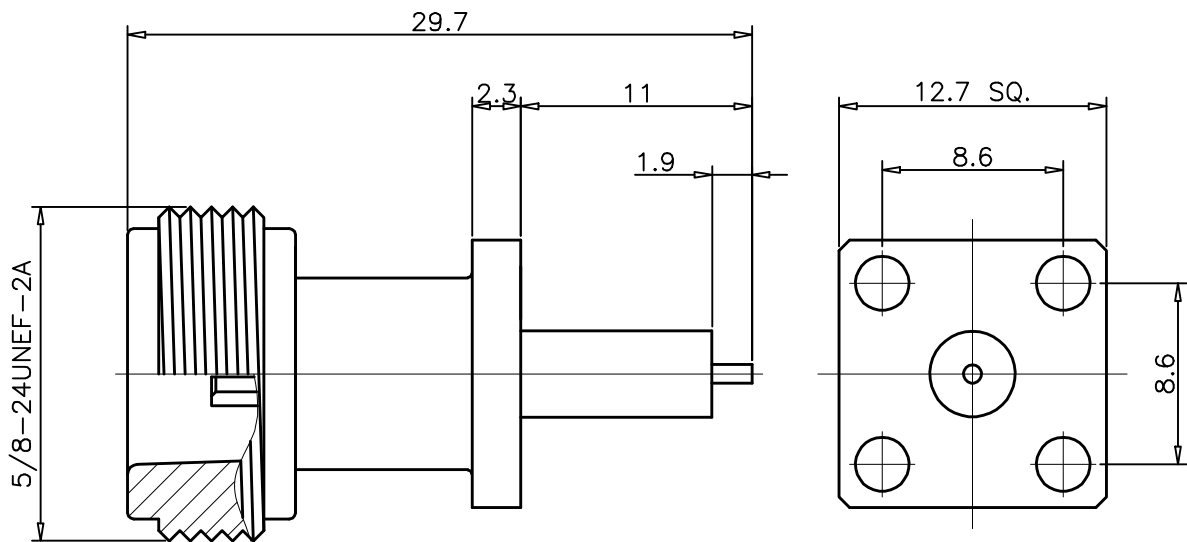


1		2		3		4	
RevNo	Revision note			Date	Signature	Checked	
00	Sketch Only			6/9/14	Teresa	Simon	



Interface Per: MIL-C-39012, IEC 60169-16

- Material & Finishing:
- 1. Center condutor: Phosphor Bronze, Gold Plating
 - 2. Insulators: PTFE
 - 3. Body : Brass, Nickel Plating

RoHS Compliant.

ALL DIMENSIONS ARE IN MILLIMETERS AND [INCHES]

KERUI ELECTRONIC CO;LTD

THESE DRAWING & SPEC. ARE THE PROPERTY OF KERUI ELECTRONIC CO;LTD AND SHALL NOT BE REPRODUCED, OR COPIED OR USED AS THE BASIS FOR THE MANUFACTURE OR SALE OF APPARATUS OR DEVICES WITHOUT THEIR EXPRESS WRITTEN CONSENT.

UNLESS OTHERWISE NOTED ALL SURFACES FINISHED TO 64/MAX.
ALL TOLERANCES ARE:
DECIMALS FRACTIONS ANGLES
x ± 1.0 ±1/64 x' ± 1°
x.x ± 0.5 x'x' ± 0.5°
x.xx ± 0.1

Title
N female flange mounted receptacle

Drawn by Teresa Ckd by Simon Appd by Richard Date 6/9/2014

Scale 3:1 Sheet 1 of 1 80 1121 041 01